

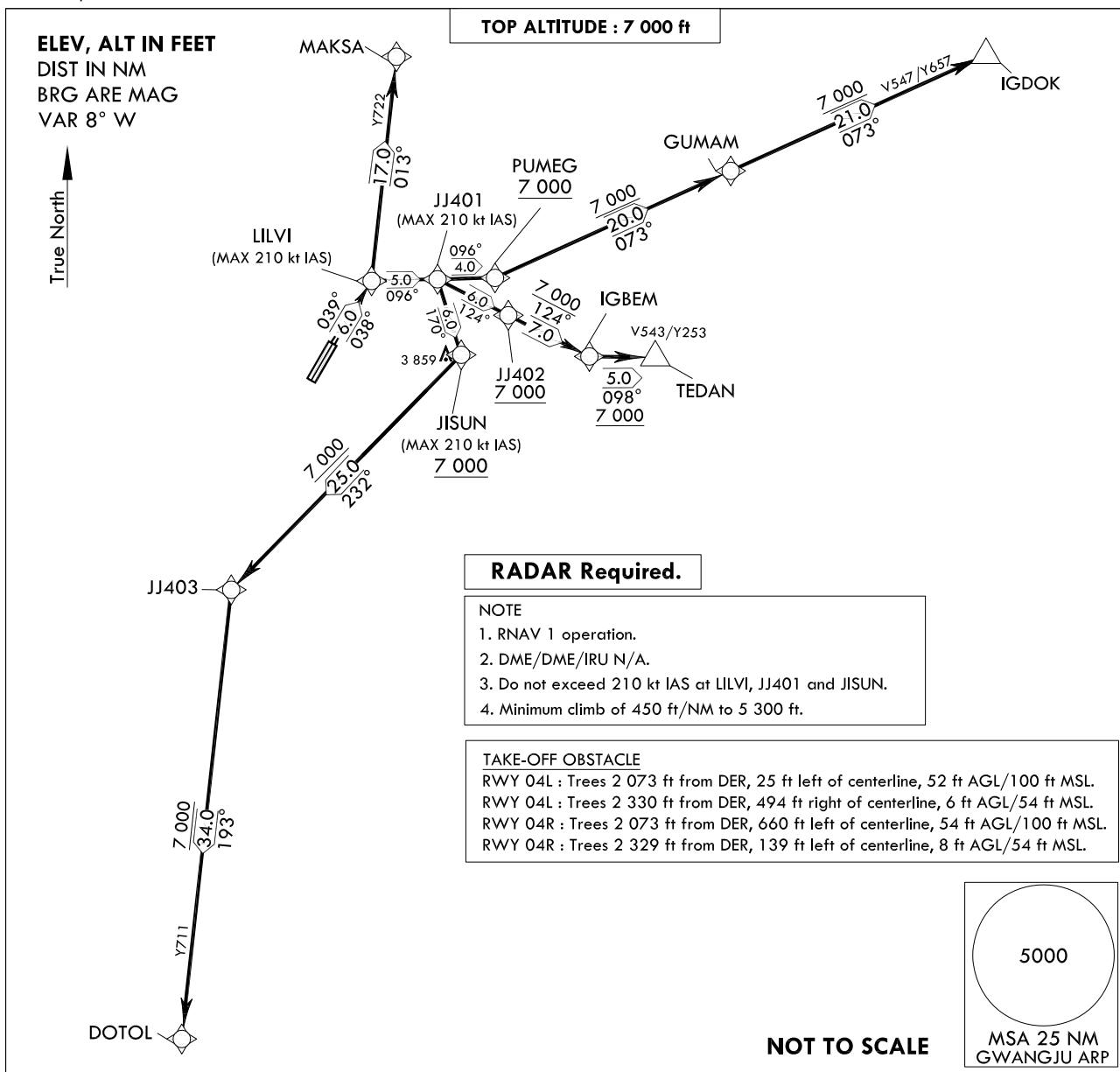
STANDARD DEPARTURE CHART
INSTRUMENT (SID)TRANSITION ALT 14 000
TRANSITION LVL FL 140GWANGJU DEP 124.0, 124.7
347.2
GWANGJU TWR 118.05
254.6

GWANGJU/Gwangju(RKJJ)

RWY 04L/R

RNAV LILVI 1

Note : Departure under U.S. TERPS.



DEPARTURE ROUTE DESCRIPTION

TAKE-OFF RWY 04R : Climb on course 038° to LILVI, thence.....TAKE-OFF RWY 04L : Climb on course 039° to LILVI, thence.....

.....transition routes and expect further clearance to filed altitude after departure.

MAKSA Transition : From LILVI track 013° to MAKSA.IGDOK Transition : From LILVI track 096° to JJ401 and track 096° to PUMEG at or above 7 000 ft,
then track 073° to GUMAM and track 073° to IGDOK.TEDAN Transition : From LILVI track 096° to JJ401 and track 124° to JJ402 at or above 7 000 ft,
then track 124° to IGBEM and track 098° to TEDAN.DOTOL Transition : From LILVI track 096° to JJ401 and track 170° to JISUN at or above 7 000 ft,
then track 232° to JJ403 and track 193° to DOTOL.

Change : Information of procedure and fix names(IPSAE → LILVI, DOOSA → PUMEG, ROYAL → GUMAM, MESIL → JISUN, OCTER → IGBEM).

GWANGJU/Gwangju(RKJJ)

RWY 04L/R

RNAV LILVI 1

AERONAUTICAL DATA TABULATION

Standard Instrument Departure Procedure Coding Tables

RNAV LILVI 1 - MAKSA Transition

Serial Number	Path Descriptor	Waypoint Identifier	Fly-over	Course/Track °M(°T)	Distance (NM)	Turn direction	Altitude (ft)	Speed (kt)	Coordinates	VPA/ RDH	Navigation specification	Remarks
001	CF	LILVI	-	04L-039 (031.0) 04R-038 (029.9)	5.7	-	-	-210	35°13'07.6"N 126°52'30.1"E	-	RNAV 1	-
002	TF	MAKSA	-	013 (005.1)	17.1	-	-	-	35°30'11.3"N 126°54'22.0"E	-	RNAV 1	-

RNAV LILVI 1 - IGDOK Transition

Serial Number	Path Descriptor	Waypoint Identifier	Fly-over	Course/Track °M(°T)	Distance (NM)	Turn direction	Altitude (ft)	Speed (kt)	Coordinates	VPA/ RDH	Navigation specification	Remarks
001	CF	LILVI	-	04L-039 (031.0) 04R-038 (029.9)	5.7	-	-	-210	35°13'07.6"N 126°52'30.1"E	-	RNAV 1	-
002	TF	JJ401	-	096 (087.4)	5.0	-	-	-210	35°13'21.1"N 126°58'35.9"E	-	RNAV 1	-
003	TF	PUMEG	-	096 (087.5)	4.4	-	+7 000	-	35°13'32.6"N 127°03'54.5"E	-	RNAV 1	-
004	TF	GUMAM	-	073 (064.5)	19.6	-	+7 000	-	35°21'59.1"N 127°25'33.7"E	-	RNAV 1	-
005	TF	IGDOK	-	073 (064.7)	21.3	-	+7 000	-	35°31'03.6"N 127°49'06.6"E	-	RNAV 1	-

RNAV LILVI 1 - TEDAN Transition

Serial Number	Path Descriptor	Waypoint Identifier	Fly-over	Course/Track °M(°T)	Distance (NM)	Turn direction	Altitude (ft)	Speed (kt)	Coordinates	VPA/ RDH	Navigation specification	Remarks
001	CF	LILVI	-	04L-039 (031.0) 04R-038 (029.9)	5.7	-	-	-210	35°13'07.6"N 126°52'30.1"E	-	RNAV 1	-
002	TF	JJ401	-	096 (087.4)	5.0	-	-	-210	35°13'21.1"N 126°58'35.9"E	-	RNAV 1	-
003	TF	JJ402	-	124 (115.8)	6.0	-	+7 000	-	35°10'43.6"N 127°05'12.9"E	-	RNAV 1	-
004	TF	IGBEM	-	124 (115.8)	6.9	-	+7 000	-	35°07'43.0"N 127°12'46.3"E	-	RNAV 1	-
005	TF	TEDAN	-	098 (089.8)	5.0	-	+7 000	-	35°07'43.8"N 127°18'52.1"E	-	RNAV 1	-

RNAV LILVI 1 - DOTOL Transition

Serial Number	Path Descriptor	Waypoint Identifier	Fly-over	Course/Track °M(°T)	Distance (NM)	Turn direction	Altitude (ft)	Speed (kt)	Coordinates	VPA/ RDH	Navigation specification	Remarks
001	CF	LILVI	-	04L-039 (031.0) 04R-038 (029.9)	5.7	-	-	-210	35°13'07.6"N 126°52'30.1"E	-	RNAV 1	-
002	TF	JJ401	-	096 (087.4)	5.0	-	-	-210	35°13'21.1"N 126°58'35.9"E	-	RNAV 1	-
003	TF	JISUN	-	170 (161.5)	6.0	-	+7 000	-210	35°07'39.2"N 127°00'55.4"E	-	RNAV 1	-
004	TF	JJ403	-	232 (223.2)	24.9	-	+7 000	-	34°49'26.5"N 126°40'11.4"E	-	RNAV 1	-
005	TF	DOTOL	-	193 (185.0)	34.3	-	+7 000	-	34°15'15.4"N 126°36'36.6"E	-	RNAV 1	-

Change : Information of procedure and fix names(IPSAB → LILVI, DOOSA → PUMEG, ROYAL → GUMAM, MESIL → JISUN, OCTER → IGBEM).

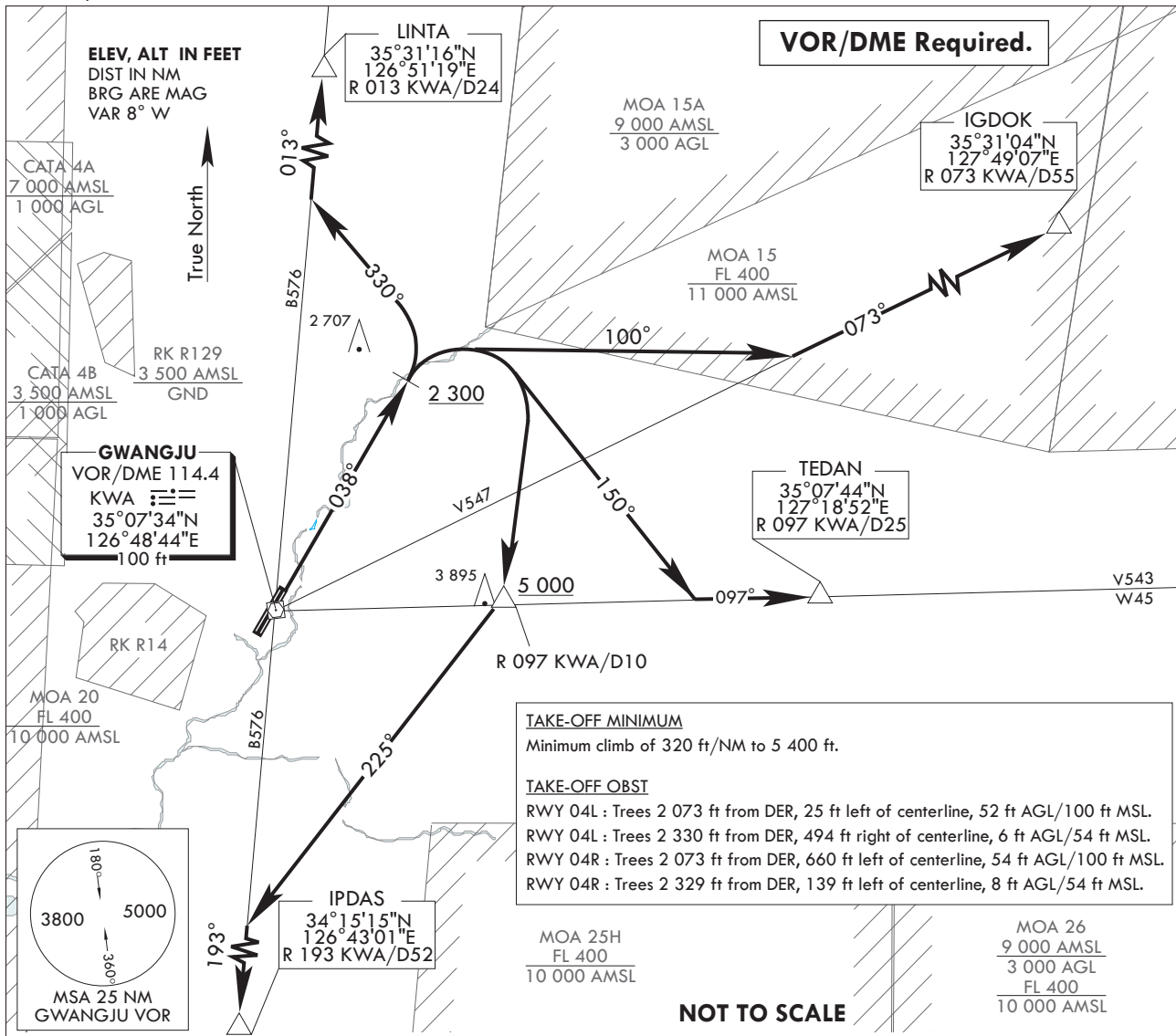
**STANDARD DEPARTURE CHART
INSTRUMENT (SID)**

TRANSITION ALT 14 000
TRANSITION LVL FL 140

GWANGJU DEP 124.0, 124.7
347.2
GWANGJU TWR 118.05
254.6

GWANGJU/Gwangju(RKJJ)
RWY 04L/R
GWANGJU 3

Note : Departure under U.S. TERPS.



DEPARTURE ROUTE DESCRIPTION

TAKE-OFF RWY 04R/L : Climb HDG 038° to 2 300 ft, then.....
..... Climb to assigned or specified altitude via (the following transition routes).

LINTA transition : Left turn HDG 330° to intercept R 013 KWA and R 013 KWA to LINTA.

IGDOK transition : Right turn HDG 100° to intercept R 073 KWA and R 073 KWA to IGDOK.

TEDAN transition : Right turn HDG 150° to intercept R 097 KWA and R 097 KWA to TEDAN.

IPDAS transition : Right turn direct to R 097 KWA/D10 at or above 5 000 ft,
then right turn HDG 225° to intercept R 193 KWA and R 193 KWA to IPDAS.

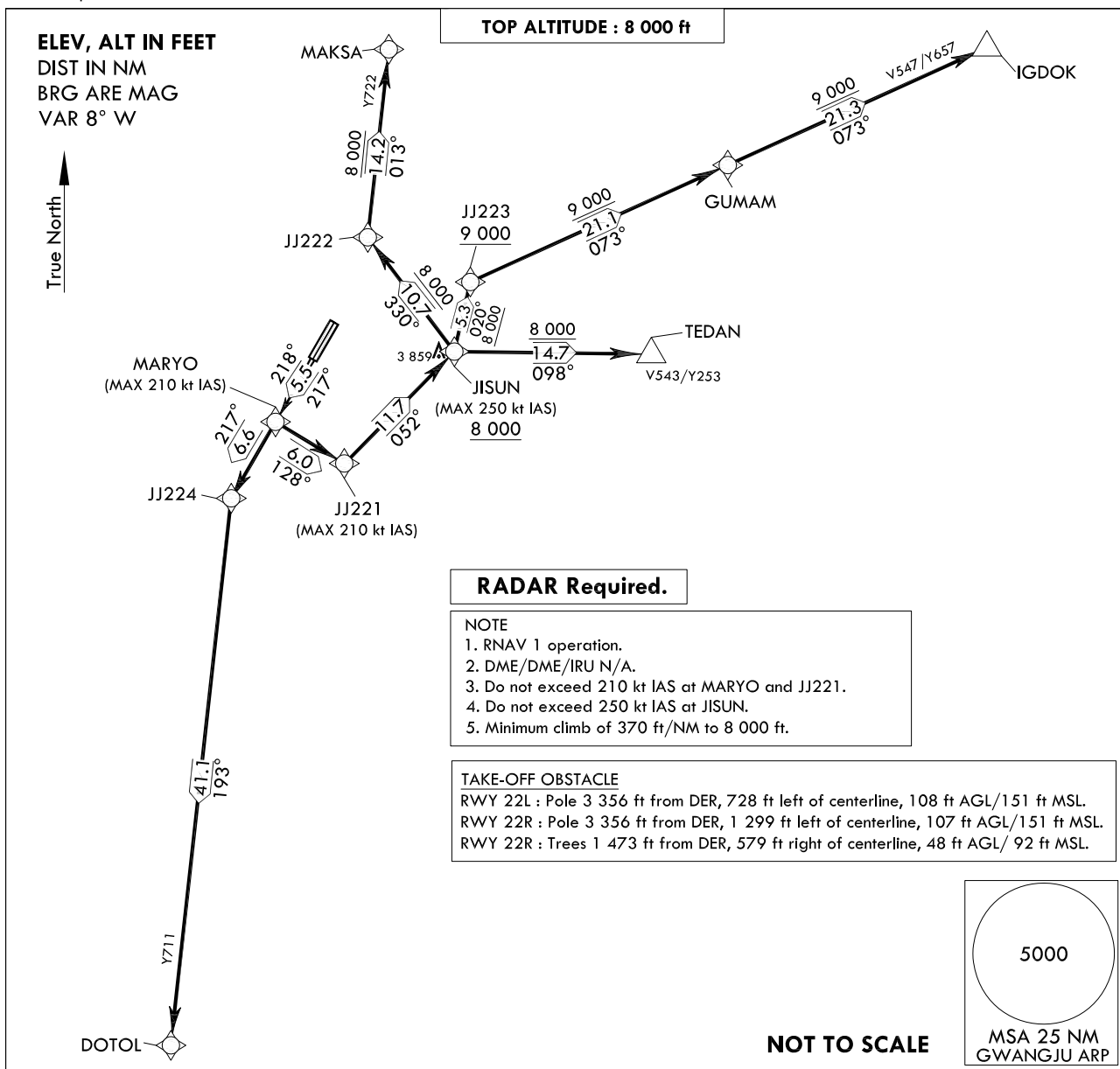
INTENTIONALLY

LEFT

BLANK

STANDARD DEPARTURE CHART
INSTRUMENT (SID)TRANSITION ALT 14 000
TRANSITION LVL FL 140GWANGJU DEP 124.0, 124.7
347.2
GWANGJU TWR 118.05
254.6GWANGJU/Gwangju(RKJJ)
RWY 22L/R
RNAV MARYO 1

Note : Departure under U.S. TERPS.



DEPARTURE ROUTE DESCRIPTION

TAKE-OFF RWY 22R : Climb on course 217° to MARYO, thence.....

TAKE-OFF RWY 22L : Climb on course 218° to MARYO, thence.....

.....transition routes and expect further clearance to filed altitude after departure.

DOTOL Transition : From MARYO track 217° to JJ224 and track 193° to DOTOL.

TEDAN Transition : From MARYO track 128° to JJ221 and track 052° to JISUN at or above 8 000 ft,
then track 098° to TEDAN.

IGDOK Transition : From MARYO track 128° to JJ221 and track 052° to JISUN at or above 8 000 ft,
then track 020° to JJ223 and track 073° to GUMAM and track 073° to IGDOK.

MAKSA Transition : From MARYO track 128° to JJ221 and track 052° to JISUN at or above 8 000 ft,
then track 330° to JJ222 and track 013° to MAKSA.

Change : Information of procedure and fix names(MUJIN → MARYO, ROYAL → GUMAM, MESIL → JISUN).

GWANGJU/Gwangju(RKJJ)

RWY 22L/R

RNAV MARYO 1

AERONAUTICAL DATA TABULATION

Standard Instrument Departure Procedure Coding Tables

RNAV MARYO 1 - DOTOL Transition

Serial Number	Path Descriptor	Waypoint Identifier	Fly-over	Course/Track °M(°T)	Distance (NM)	Turn direction	Altitude (ft)	Speed (kt)	Coordinates	VPA/ RDH	Navigation specification	Remarks
001	CF	MARYO	-	22L-218 (209.9) 22R-217 (208.8)	5.5	-	-	-210	35°02'06.6"N 126°44'47.0"E	-	RNAV 1	-
002	TF	JJ224	-	217 (208.8)	6.6	-	-	-	34°56'18.9"N 126°40'54.9"E	-	RNAV 1	-
003	TF	DOTOL	-	193 (185.0)	41.1	-	-	-	34°15'15.4"N 126°36'36.6"E	-	RNAV 1	-

RNAV MARYO 1 - TEDAN Transition

Serial Number	Path Descriptor	Waypoint Identifier	Fly-over	Course/Track °M(°T)	Distance (NM)	Turn direction	Altitude (ft)	Speed (kt)	Coordinates	VPA/ RDH	Navigation specification	Remarks
001	CF	MARYO	-	22L-218 (209.9) 22R-217 (208.8)	5.5	-	-	-210	35°02'06.6"N 126°44'47.0"E	-	RNAV 1	-
002	TF	JJ221	-	128 (119.9)	6.0	-	-	-210	34°59'06.8"N 126°51'06.8"E	-	RNAV 1	-
003	TF	JISUN	-	052 (043.3)	11.7	-	+8 000	-250	35°07'39.2"N 127°00'55.4"E	-	RNAV 1	-
004	TF	TEDAN	-	098 (089.6)	14.7	-	+8 000	-	35°07'43.8"N 127°18'52.1"E	-	RNAV 1	-

RNAV MARYO 1 - IGDOK Transition

Serial Number	Path Descriptor	Waypoint Identifier	Fly-over	Course/Track °M(°T)	Distance (NM)	Turn direction	Altitude (ft)	Speed (kt)	Coordinates	VPA/ RDH	Navigation specification	Remarks
001	CF	MARYO	-	22L-218 (209.9) 22R-217 (208.8)	5.5	-	-	-210	35°02'06.6"N 126°44'47.0"E	-	RNAV 1	-
002	TF	JJ221	-	128 (119.9)	6.0	-	-	-210	34°59'06.8"N 126°51'06.8"E	-	RNAV 1	-
003	TF	JISUN	-	052 (043.3)	11.7	-	+8 000	-250	35°07'39.2"N 127°00'55.4"E	-	RNAV 1	-
004	TF	JJ223	-	020 (011.8)	5.3	-	+9 000	-	35°12'53.6"N 127°02'15.1"E	-	RNAV 1	-
005	TF	GUMAM	-	073 (064.5)	21.1	-	+9 000	-	35°21'59.1"N 127°25'33.7"E	-	RNAV 1	-
006	TF	IGDOK	-	073 (064.7)	21.3	-	+9 000	-	35°31'03.6"N 127°49'06.6"E	-	RNAV 1	-

RNAV MARYO 1 - MAKSA Transition

Serial Number	Path Descriptor	Waypoint Identifier	Fly-over	Course/Track °M(°T)	Distance (NM)	Turn direction	Altitude (ft)	Speed (kt)	Coordinates	VPA/ RDH	Navigation specification	Remarks
001	CF	MARYO	-	22L-218 (209.9) 22R-217 (208.8)	5.5	-	-	-210	35°02'06.6"N 126°44'47.0"E	-	RNAV 1	-
002	TF	JJ221	-	128 (119.9)	6.0	-	-	-210	34°59'06.8"N 126°51'06.8"E	-	RNAV 1	-
003	TF	JISUN	-	052 (043.3)	11.7	-	+8 000	-250	35°07'39.2"N 127°00'55.4"E	-	RNAV 1	-
004	TF	JJ222	-	330 (321.8)	10.7	-	+8 000	-	35°16'04.6"N 126°52'49.4"E	-	RNAV 1	-
005	TF	MAKSA	-	013 (005.1)	14.2	-	+8 000	-	35°30'11.3"N 126°54'22.0"E	-	RNAV 1	-

Change : Information of procedure and fix names(MUJIN → MARYO, ROYAL → GUMAM, MESIL → JISUN).

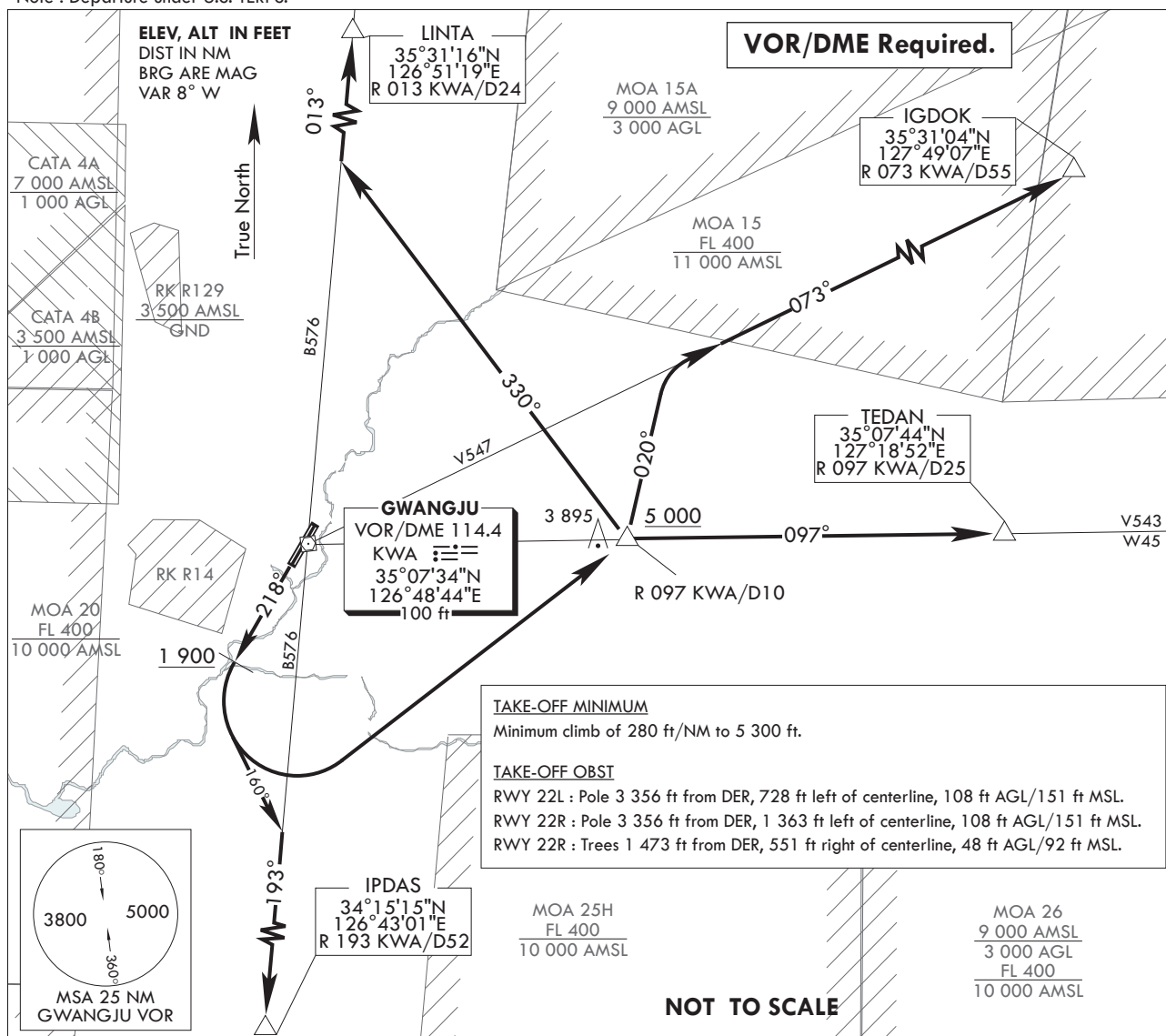
STANDARD DEPARTURE CHART
INSTRUMENT (SID)

TRANSITION ALT 14 000
TRANSITION LVL FL 140

GWANGJU DEP 124.0, 124.7
347.2
GWANGJU TWR 118.05
254.6

GWANGJU/Gwangju(RKJJ)
RWY 22L/R
GWANGJU 4

Note : Departure under U.S. TERPS.



DEPARTURE ROUTE DESCRIPTION

TAKE-OFF RWY 22L/R : Climb HDG 218° to 1 900 ft, then.....
..... Climb to assigned or specified altitude via (the following transition routes).

IPDAS transition : Left turn HDG 160° to intercept R 193 KWA and R 193 KWA to IPDAS.

LINTA transition : Left turn direct to R 097 KWA/D10 at or above 5 000 ft, then left turn HDG 330° to intercept R 013 KWA and R 013 KWA to LINTA.

IGDOK transition : Left turn direct to R 097 KWA/D10 at or above 5 000 ft, then left turn HDG 020° to intercept R 073 KWA and R 073 KWA to IGDOK.

TEDAN transition : Left turn direct to R 097 KWA/D10 at or above 5 000 ft, then right turn direct to TEDAN.

INTENTIONALLY

LEFT

BLANK

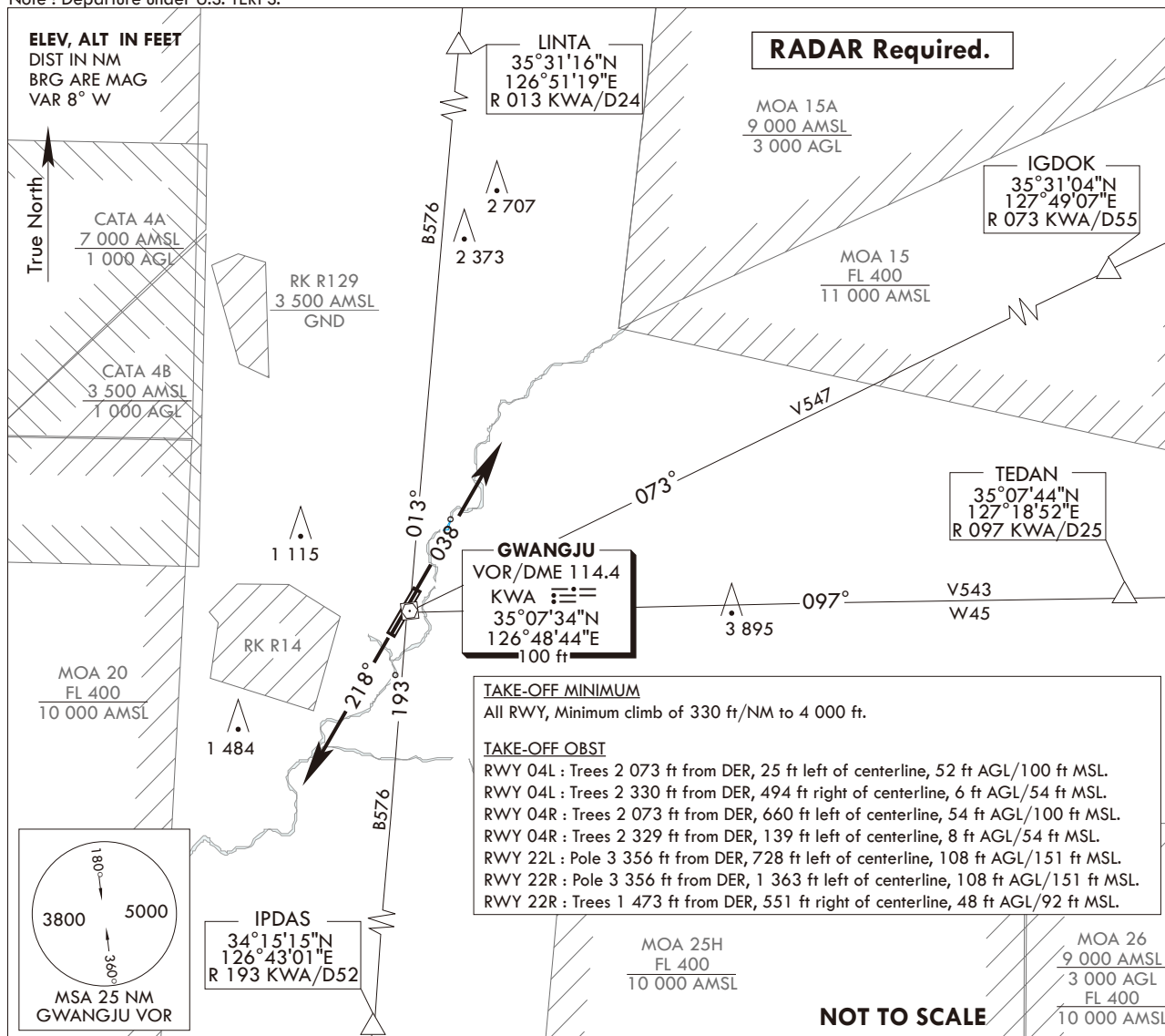
**STANDARD DEPARTURE CHART
INSTRUMENT (SID)**

TRANSITION ALT 14 000
TRANSITION LVL FL 140

GWANGJU DEP 124.0, 124.7
347.2
GWANGJU TWR 118.05
254.6

GWANGJU/Gwangju(RKJJ)
RWY 04L/R, 22L/R
GWANGJU 5

Note : Departure under U.S. TERPS.



DEPARTURE ROUTE DESCRIPTION

TAKE-OFF RWY 04L/R : Climb HDG 038°, thence.....

TAKE-OFF RWY 22L/R : Climb HDG 218°, thence.....

..... Except radar vectors to intercept filed Enroute fix or Navaid.
Maintain 8 000 ft or assigned altitude(flight level).
Expect filed altitude/flight level within 10 minutes after departure.

LOST COMMUNICATIONS : If radio contact is not established with departure control prior to reaching 4 000 ft, continue climb to 8 000 ft before turning to filed fix/Navaid and proceed filed route and altitude.

Change : Amended phrase(flight → flight) .

INTENTIONALLY

LEFT

BLANK